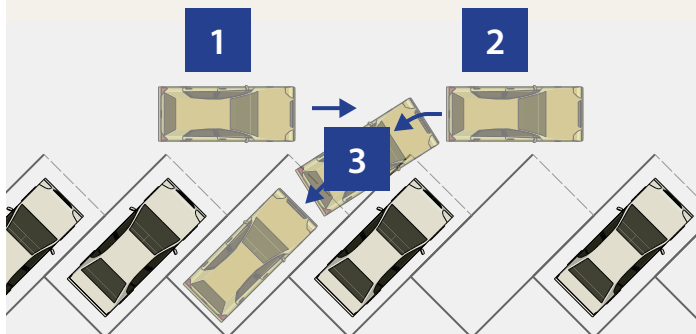




HOW DOES IT WORK?

- 1 Signal a right turn to other drivers**
just like parallel parking
- 2 Pull past the parking spot and stop**
just like parallel parking
- 3 Reverse into the parking spot in just one move**
half the effort of parallel parking



WHERE IS HEAD-OUT ANGLED PARKING USED?

- Arlington, VA
- Austin, TX
- Bethlehem, PA
- Birmingham, AL
- Burlington, VT
- Charlotte, NC
- Chico, CA
- Columbia, MO
- Everett, WA
- Frederick, MD
- Honolulu, HI
- Indianapolis, IN
- Lebanon, NH
- Marquette, MI
- Missoula, MT
- Montreal, Canada
- New York, NY
- Olympia, WA
- Philadelphia, PA
- Portland, OR
- Pottstown, PA
- Salem, OR
- Salt Lake City, UT
- Sacramento, CA
- San Francisco, CA
- Seattle, WA
- Somerville, MA
- Syracuse, NY
- Tacoma, WA
- Tucson, AZ
- Ventura, CA
- Washington, DC



CHESTNUT STREET HEAD-OUT ANGLED PARKING

creating a safer, more
accessible downtown

For more information, contact:

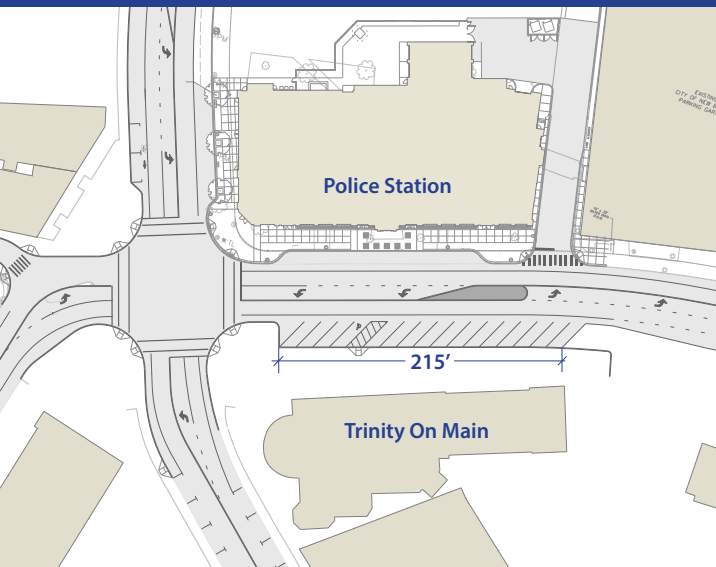
Mark E. Moriarty, P.E.
Director of Public Works
(860) 826-3350

City of New Britain

Mayor Tim O'Brien
Department of
Public Works



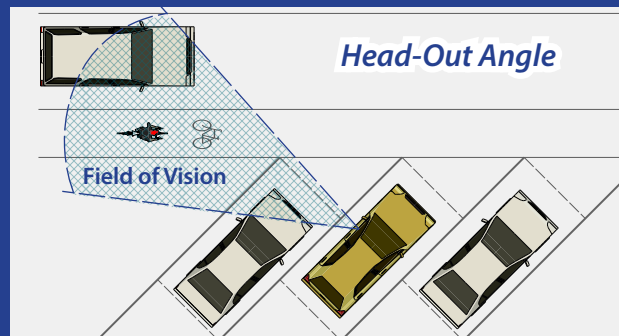
HEAD-OUT ANGLED PARKING ON CHESTNUT STREET



New head-out angled parking on Chestnut Street will provide 70% more parking spaces for downtown stores, restaurants and cultural events



HEAD-OUT ANGLED PARKING ADVANTAGES



GREATER FIELD OF VISION than traditional back out angled parking

EASIER THAN PARALLEL PARKING

SAFER THAN TRADITIONAL BACK OUT ANGLED PARKING -- since a driver does not back out blindly into traffic, **FEWER ACCIDENTS** can be expected

SAFER LOADING and UNLOADING of children and cargo - all sides of the vehicle are shielded from oncoming traffic

MORE PARKING SPACES than parallel parking because less curb space is used

EASIER for larger vehicles to park in angled spaces than parallel parking

IMPROVED HANDICAPPED PARKING because spaces can be placed adjacent to curb ramps

SAFER FOR CYCLISTS

